



B100

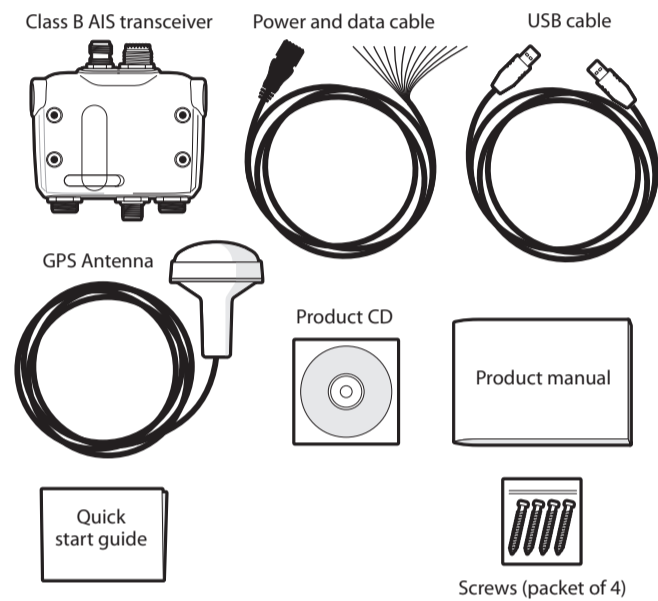
Class B AIS Transceiver

QUICK-START GUIDE

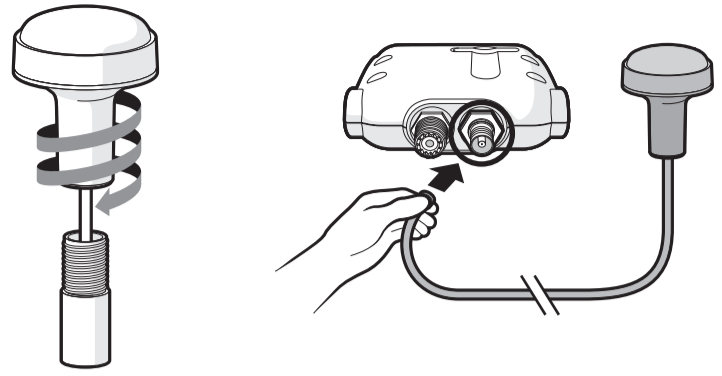


For full instructions of how to install and use your B100 Class B AIS Transceiver please refer to the Installation and Operation Manual.

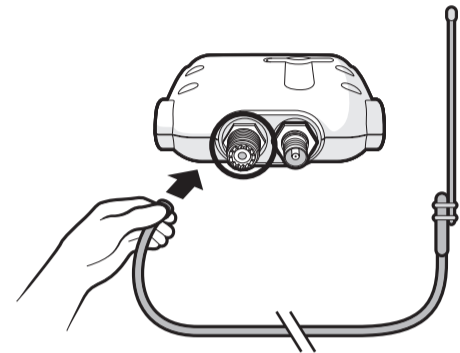
What's in the box?



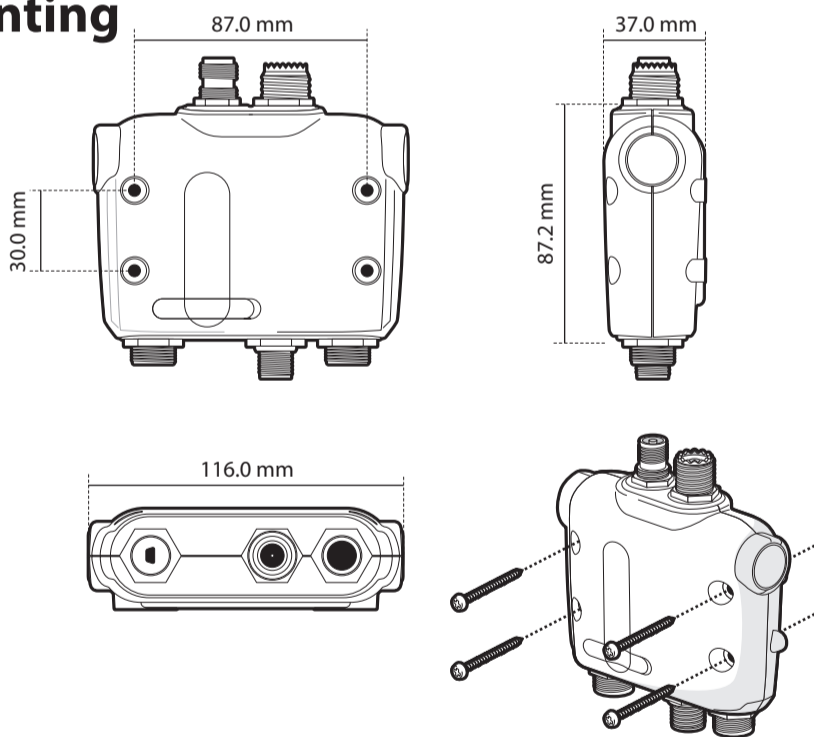
Install the GPS antenna



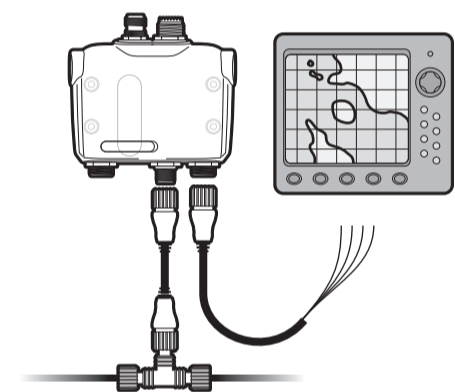
Install the VHF antenna



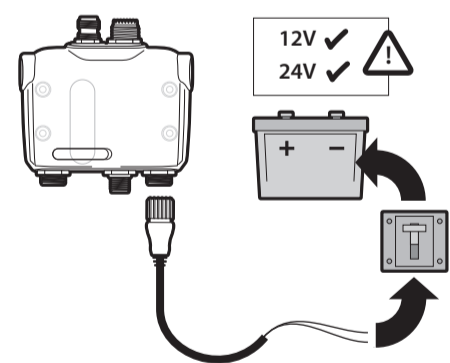
Mounting



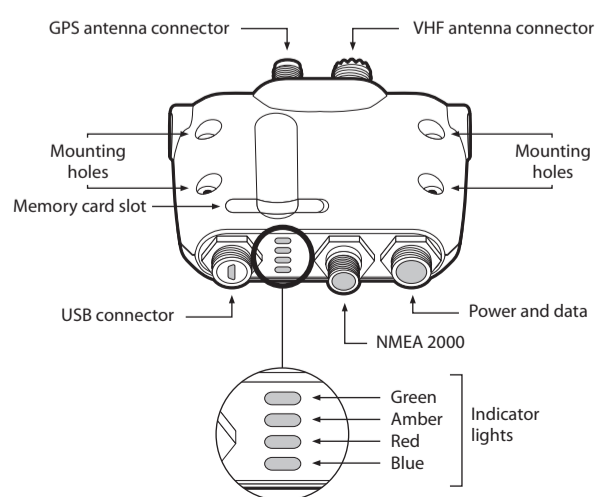
Connect to the chart plotter



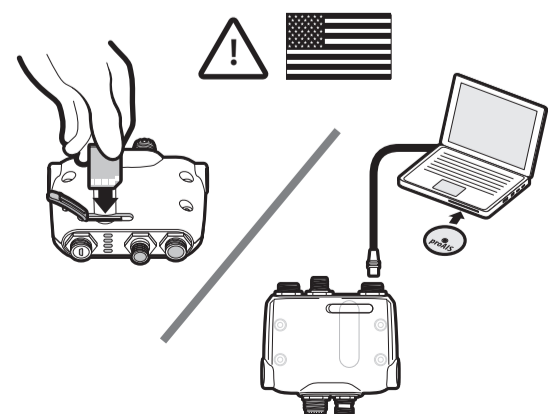
Connect to the power supply



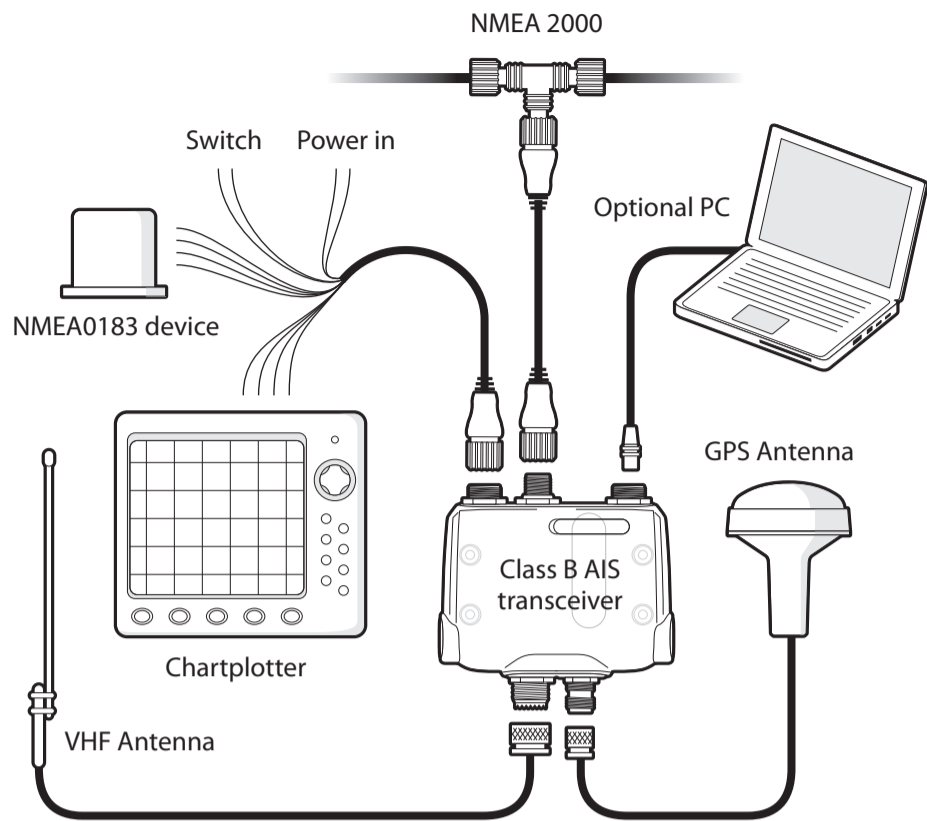
AIS transceiver overview



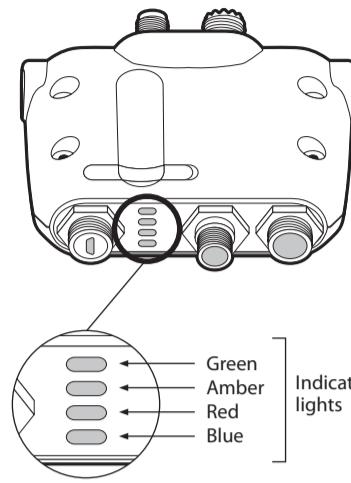
Configure the transceiver



Typical installation configuration



Indicator functions



Green indicator only

The AIS transceiver is powered up, has a position fix and has transmitted at least one vessel information report. If the green indicator flashes this indicates the memory card is full and data logging has stopped.

Red indicator only

The AIS transceiver has detected a system error.

Amber and blue indicators

The AIS transceiver is in 'silent' mode.

Amber indicator only

The AIS transceiver is in 'transmit timeout' mode.

Red and amber indicators

No MMSI number programmed and/or no DC power detected.

Flashing amber indicator only

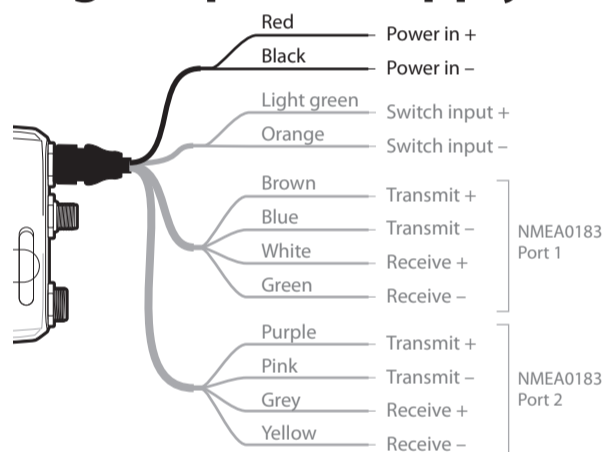
The unit is waiting for a GPS fix.

Red indicator only

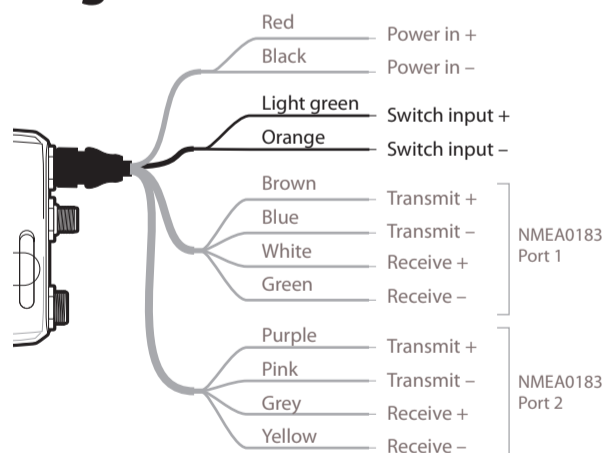
VSWR error.

For further details please see the Installation and Operation Manual.

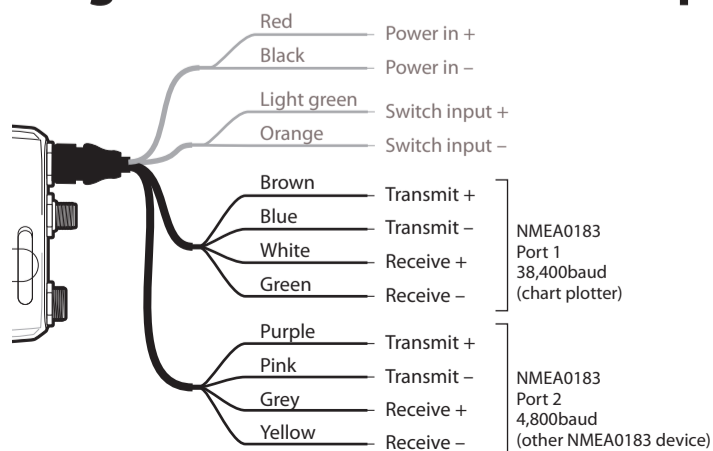
Connecting the power supply



Connecting an external switch



Connecting to the NMEA0183 data port



Important Notes

Using an AIS antenna splitter

The em-trak B100 can be used with an AIS antenna splitter in order to share a single VHF antenna with a VHF radio.

To ensure best performance and reliability em-trak strongly recommends that only the em-trak S100 antenna splitter is used with the B100.

Third party antenna splitters can adversely affect the radio performance of the system and may result in permanent damage to connected equipment.

Please ask your retailer or installer for further details on the em-trak S100 antenna splitter.

USB usage guidance

The USB port built into this product is not isolated from the vessel power supply, VHF antenna ground or GPS ground. Please observe the following procedures when connecting the USB port to avoid grounding problems.

If the computer is permanently installed on the vessel and / or electrically connected to any other vessel equipment, including power supplies, it is recommended that connection is made using the NMEA0183 or NMEA 2000 interfaces. These benefit from being specifically designed for use in the marine environment and provide isolated and robust communication between your devices.

If a battery powered laptop is being used then it is recommended that you always switch off the computer before connecting the USB cable.

Utilisation de la connection USB

La connection USB de ce produit n'est pas isolée du réseau électrique de votre vaisseau, ni de la masse de l'antenne VHF, ni de la masse de l'antenne GPS. Veuillez suivre les procédures suivantes, si vous connectez le port USB pour éviter les problèmes associés avec la mise à terre.

Si votre PC/MAC est installé en permanence sur votre vaisseau et/ou il est connecté aux autres équipements installés à bord (sources de courant inclus), il est recommandé que la connexion soit établie par les interfaces NMEA0183 ou NMEA2000.

Ces connexions sont spécifiquement désignées pour une utilisation dans un environnement marin et elles assurent une communication isolée et robuste entre vos appareils.

Si vous utilisez un PC portable alimenté à sa propre pile, il est important d'assurer votre PC soit éteint qu'avant de connecter / déconnecter le câble USB.

ATTENTION! US customers only

In accordance with the rules of the US Federal Communications Commission your B100 Class B transceiver must be correctly programmed before it will fully operate.

Until programmed your B100 will NOT transmit and will only receive AIS messages.

To program your B100 please complete the following instructions:

1. Go to www.em-trak.com
2. Select the 'USA Owners Registration' button located on the home page.
3. Complete the online 'SD Card Programming Form'.
4. Click 'Submit'.
5. Within 10 working days you will receive in the mail an SD card which will contain all the programming information you provided in the online SD card programming form.
6. Ensure your B100 is powered off and firmly insert the SD card into the slot on the top of the B100.
7. Power on your B100.
8. The LED lights will flash green to indicate that your B100 has been programmed and is now fully operational.
9. The programming information will be automatically deleted from your SD card, and the SD card can be removed from the B100.

Head Office:

em-trak Marine Electronics Ltd
Wireless House, Westfield Industrial Estate,
Midsomer Norton, Bath, BA3 4BS, UK
E: enquiries@em-trak.com
T: +44 (0) 1761 409 559, F: +44 (0) 1761 410 093

Regional Office:

em-trak Marine Electronics Ltd
470 Atlantic Avenue, 4th Floor,
Boston, MA 02210, USA
E: enquiries@em-trak.com
T: +1 617 273 8395, F: +1 617 273 8001